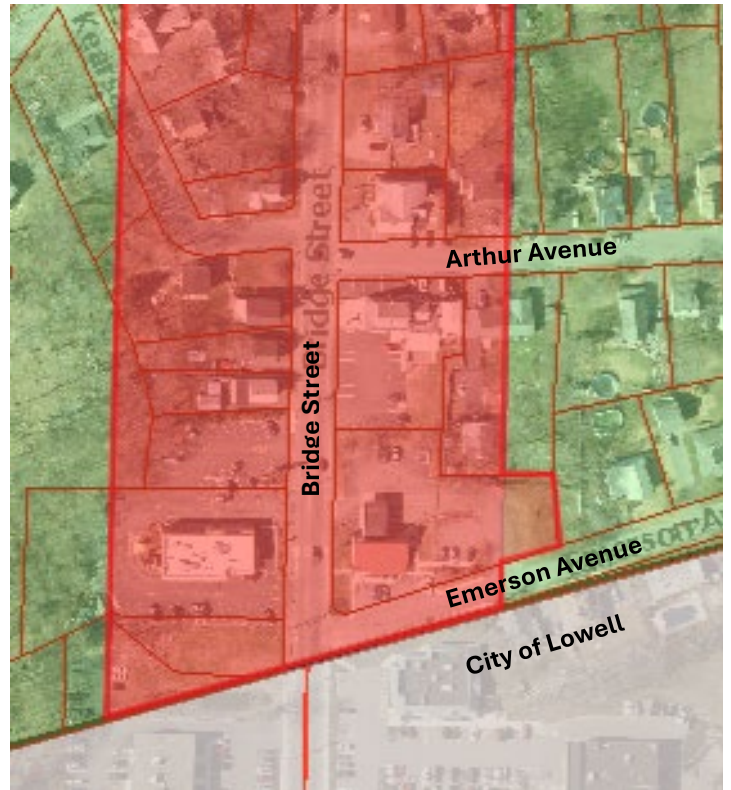
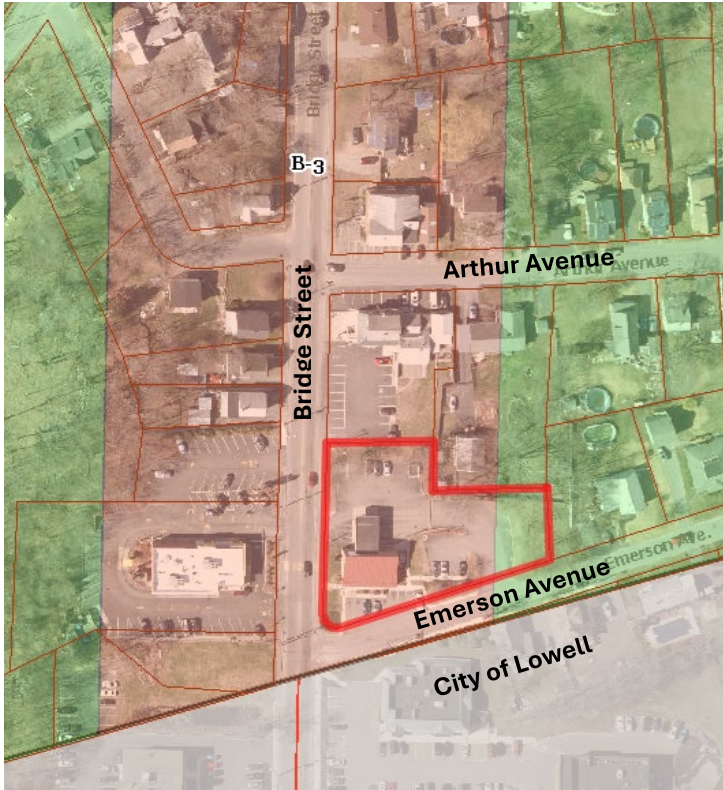


ZONING BY-LAW – ZONING MAP UPDATE

1255 Bridge Street

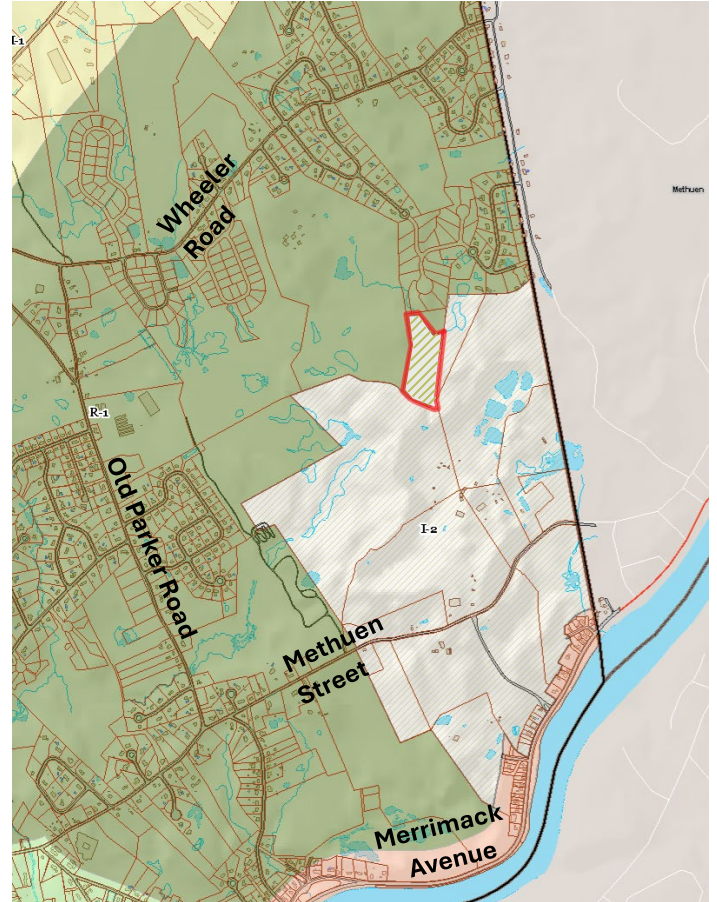
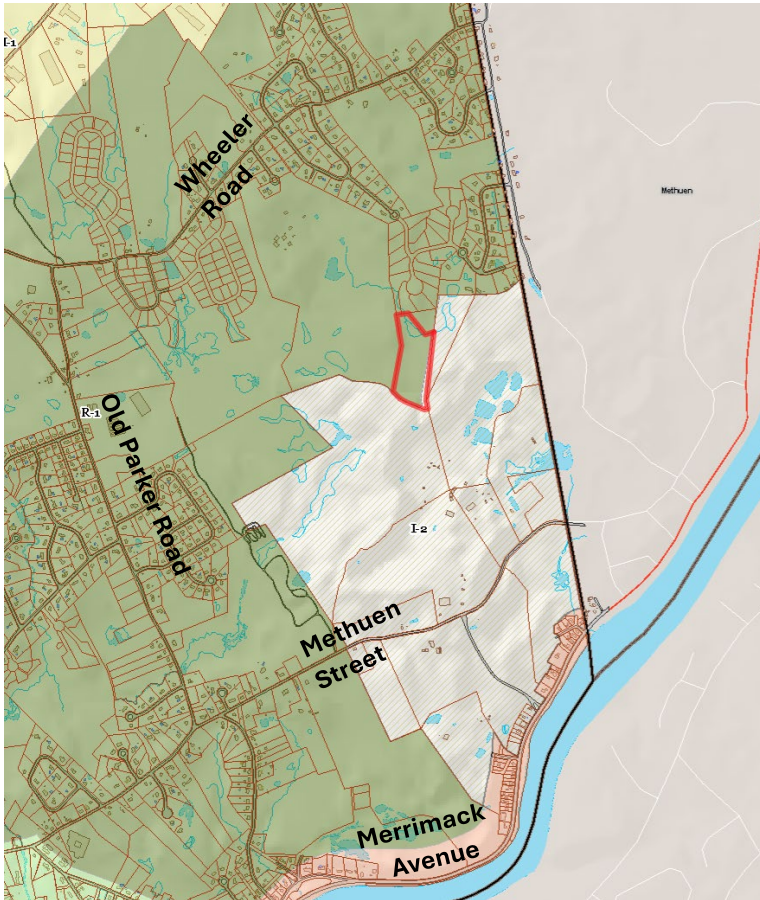
To see if the Town will vote to amend the Town of Dracut's Zoning Map by altering the limits of the B-3 zoning district to include the entirety of 1255 Bridge Street (Tax Map 50, Lot 238 (0.67 Acres)), within the B-3 zoning district, as shown on the plan below; or take any action related thereto.



ZONING BY-LAW – ZONING MAP UPDATE

65 Elizabeth Drive

To see if the Town will vote to amend the Zoning Map by rezoning the parcel known as 65 Elizabeth Drive (Tax Map 39, Lot 53-24 (11.05 acres)) from the R-1 zoning district to the I-2 zoning district, as shown on the plans below; or take any action related thereto.



ZONING BY-LAW UPDATE

Business 3 (B-3) District Parcel Size

To see if the Town will vote to amend Section 4.4 of the Town of Dracut Zoning Bylaw by amending Table of Standard Dimensional Requirements to reduce the Minimum Lot Area required in the B-3 District to 29,000 square feet as shown below (insertion shown in bold and deletion shown as struck through); or take any action related thereto.

4.4 Table of Standard Dimensional Requirements

Dimension	B1	B3	B4	B5
Minimum Lot Area (Square Feet)	22,000	30,000 29,000	40,000	40,000
Minimum Lot Frontage (Lin. Feet)	125	150	200	200
Minimum Lot Width (Lin. Feet)	20	20	50	50
Minimum Front Yard (Lin. Feet) 4*	10	50	50	50
Minimum Side Yard (Lin. Feet) 2*	20	30	30	30
Minimum Rear Yard (Lin. Feet) 2*	15	20	40	40
Maximum Building Height (Stories/Lin. Feet)	2.5/36	3/40	3.5/45	3.5/45
Maximum Lot Coverage (Percentage)	75	75	65	65