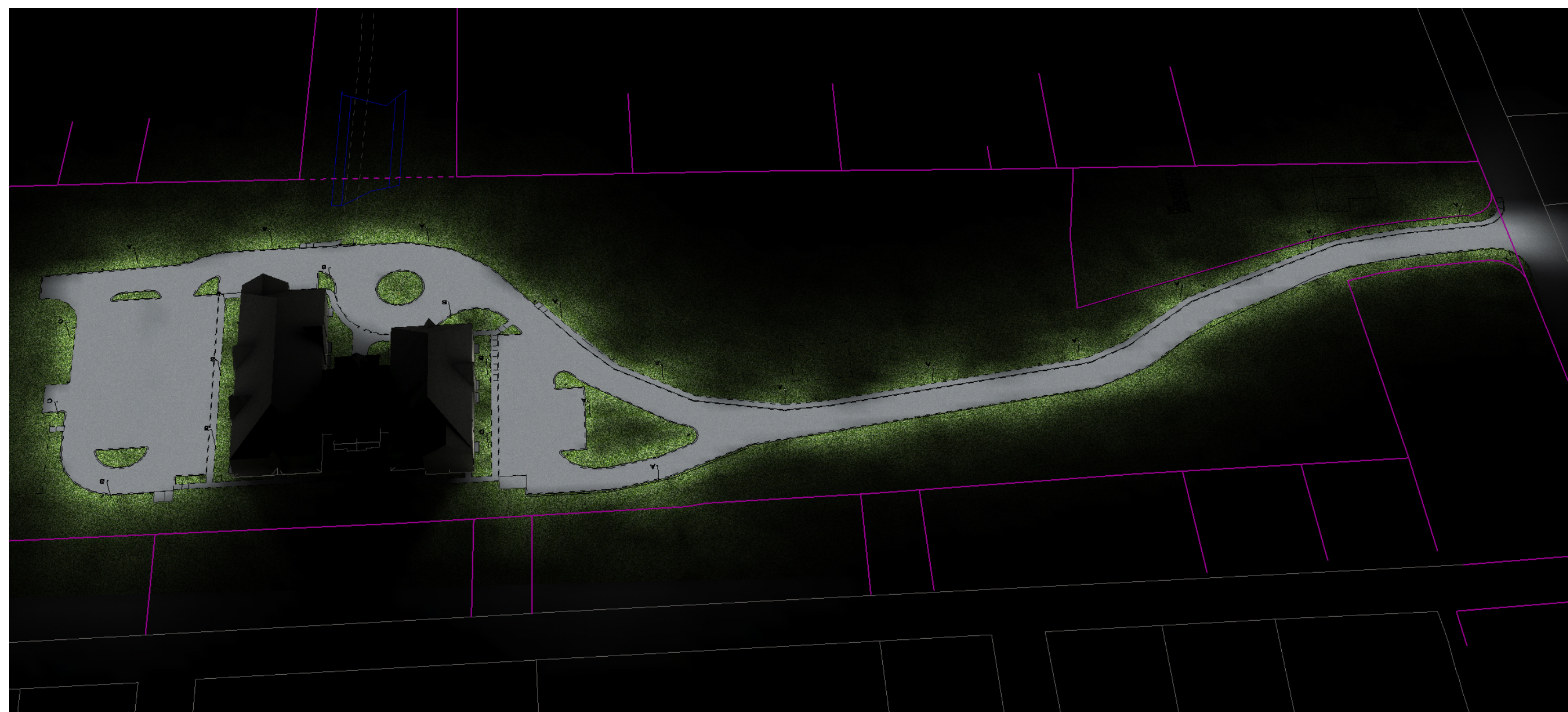
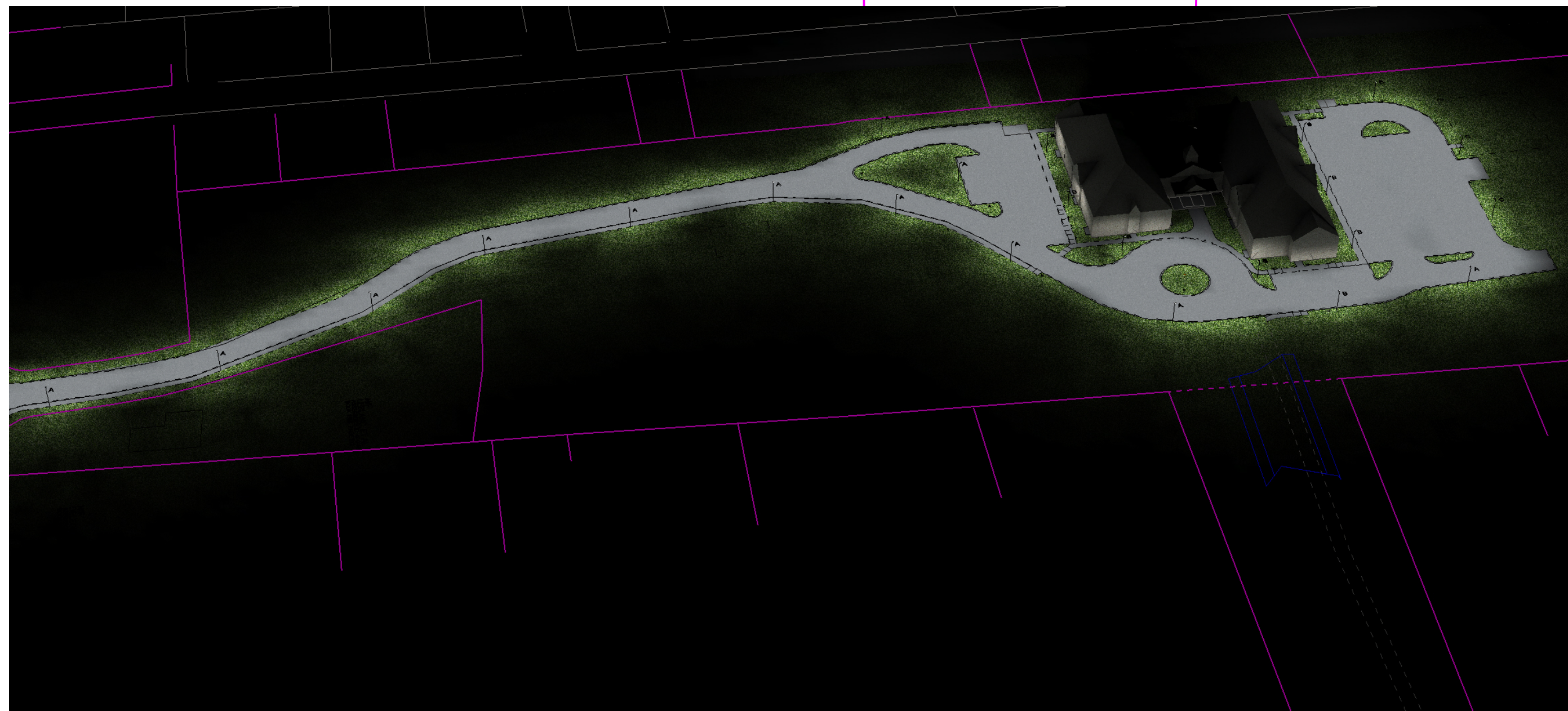
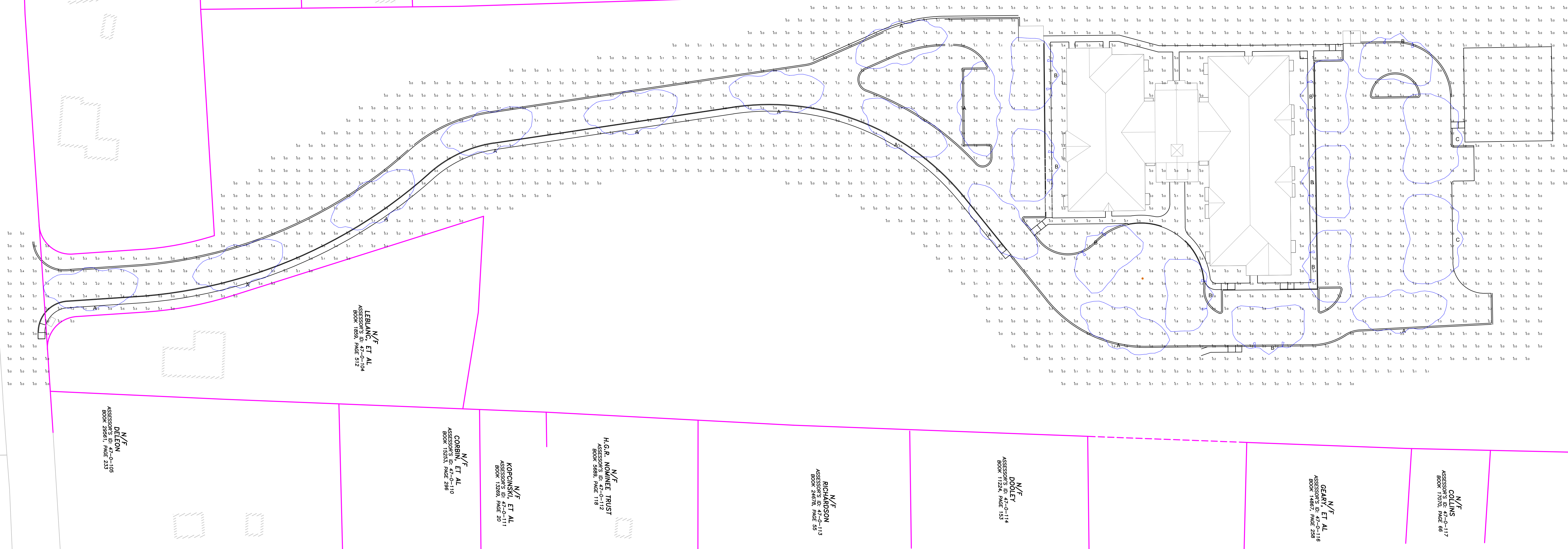
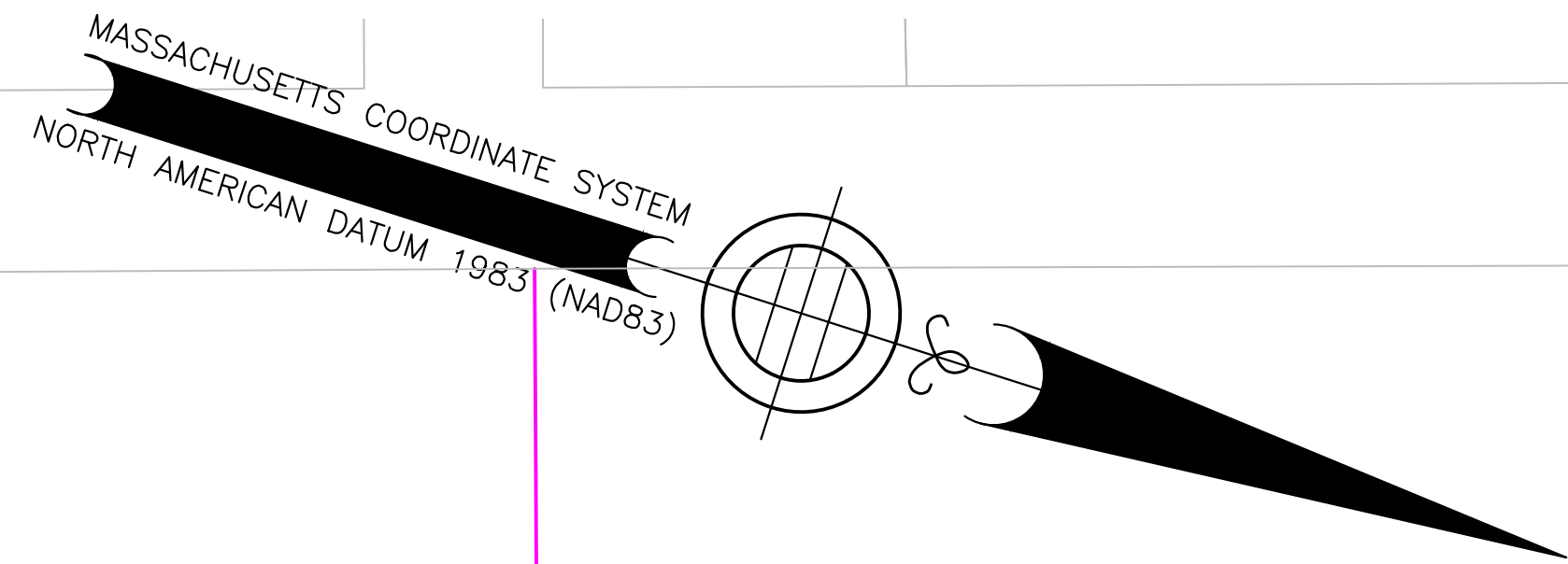


CALCULATION SUMMARY							
AREA	CALCTYPE	UNITS	AVG	MAX	MIN	AVGMIN	MAXMIN
SITE	Illuminance	Fc	0.67	4.1	0.0	N.A.	N.A.
PARKING AND DRIVELANES	Illuminance	Fc	1.40	3.7	0.5	2.80	7.40



Construction

Construction

The decorative pendant mount luminaire is pendant mounted in place with stainless steel bolt. The driver is located in the cast aluminum top housing, and is accessible without tools by hinging the lower shade assembly. The lower shade assembly is a one-piece aluminum spinning.

Optics:

One piece optical system with internal brass standoffs soldered to the board which can be field replaced. Two-piece die cut silicone and polycarbonate foam gasket ensures weather-proof seal around each individual LED and allows luminaires to be rated for high-pressure hose down applications. The optical cartridge is secured to the aluminum heat sink with fasteners to ensure thermal conductivity. Optics held into place without use of adhesives and complete assembly is gasketed for high pressure hose down cleaning.

Electrical:

Luminaire equipped with LED driver that operates with 120-277V universal voltage, 50/60Hz and includes 0-10V dimming capability. Power factor is 0.92 at full load. All electrical components rated at 50,000 hours at full load and 40°C ambient conditions. Thermal feedback between PCB and driver to protect luminaire from excessive temperature by reducing drive current as necessary. Surge protection standard with device providing surge current rating of 20KA using 8/20 μ sec wave, LSP clamping voltage of 825V and surge rating of 540J.

Finish:

Polyester powder paint finish that is corrosion resistant and resists surface impacts up to 160 inch-pound.

Listing/Certification:

The luminaire bears a CSA label and is marked suitable for wet locations.

Warranty:

5 year limited warranty covering LED array and LED driver(s)

atalog number:

Series	Engine/Wattage	Color Temp	Distribution	Finish	Options
PCAD5 - Designer Small	27LED - 24LEDs @ 27W	3K - 3000K, 70 CRI	2 - Type 2	BZ - Bronze	BLANK
PCADL - Designer Large	55LED - 48LEDs @ 55W	4K - 4000K, 70 CRI	3 - Type 3	BL - Black	PC120 - 120° Photocell
	85LED - 36LEDs @ 85W		4 - Type 4	GN - Green	PC177 - 177° Photocell
	110LED - 48LEDs @ 110W ^{***}		4W - Type 4 Wide		CB - Backlight Control
	136LED - 60LEDs @ 136W ^{***}		5R - Type 5 Rectangle		
			5W - Type 5 Round		

Large Only

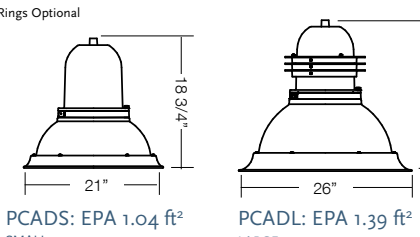
For more information visit our website: www.progresslighting.com

Images:



*Item sold separately

Dimensions & Mounting



940% UPLIGHT - DARK SKY COMPLIANT

Engine/ Wattage	# of LEDs	Delivered Lumens (varies by optics)	Delivered LPW	Drive Current (milliamps)
27	24	3600-3900	131-139	350 mA
55	24	6100-6450	107-113	700 mA
85	36	9100-9700	108-114	700 mA
110	48	12400-1800	110-116	700 mA
136	60	15200-16200	111-117	700 mA

Progress Lighting • 701 Millennium Boulevard • Greenville, SC 29607
REV 03/09

PROGRESS
LIGHTING™
COMMERCIAL

701 MILLENNIUM BLVD
GREENVILLE, SC 29607

WWW.PROGRESSLIGHTING.COM
APRUITT@PROGRESSLIGHTING.COM
864.678.1671

GREENMONT SENIOR LIVING

DRACUT MA
SITE LIGHTING

SCALE: 1" = 40'

DRAWN BY: APRU

DATE: 08.18.20

REVISIONS:

[illegible]

ACCOUNT MANAGER:

ANTHONY DADALT

GENERAL NOTES:

THIS LIGHTING DESIGN IS BASED ON LIMITED INFORMATION SUPPLIED BY OTHERS TO PROGRESS COMMERCIAL. SITE DETAILS PROVIDED HEREIN ARE REPRODUCED ONLY AS A VISUALIZATION AID AND FIELD DEVIATIONS MAY SIGNIFICANTLY AFFECT PREDICTED PERFORMANCE. PRIOR TO INSTALLATION - CRITICAL SITE INFORMATION (POLE LOCATIONS, ORIENTATION, MOUNTING HEIGHT, ETC) SHOULD BE COORDINATED WITH THE CONTRACTOR AND/OR SPECIFIER RESPONSIBLE FOR THE PROJECT. CONFORMANCE TO FACILITY CODE AND OTHER LOCAL REQUIREMENTS IS THE RESPONSIBILITY OF THE OWNER AND/OR THE OWNER'S REPRESENTATIVE.

PROJECT NUMBER:

081720GSL